

# Intoximeters

Experience • Service • Integrity



## Alco-Sensor FST® Passive Screener

Automatic sampling, handheld passive screening device designed for officer safety and ease of use

**Intoximeters' instruments have been proven time and time again to be the most accurate on the market. We have led the breath alcohol testing industry for over 60 years.**

With the Alco-Sensor FST Passive Screener, we've made officer safety a top priority. Unlike other instruments in the industry, the FST Passive Screener features our patented rear-facing display allowing the operator to view the instrument's display while remaining in control of the subject and monitoring the surrounding environment.

The Alco-Sensor FST Passive Screener is a pocket-sized, handheld breath alcohol tester that automatically samples and analyzes the subject's breath sample for alcohol. It is designed for both left- and right-hand use. It's graphic based menu structure allows a user-friendly instrument that is easy to operate.

In addition, this instrument has superior performance in low light conditions. It features a back-lit LCD display, and multi-color back-lit messaging to warn of important test conditions.

Since 1945, Intoximeters has been manufacturing products to assist in DUI enforcement. Our Alco-Sensor® products are the most accurate handheld breath alcohol analyzers available today, and are the standard by which other handheld breath alcohol analyzers are compared.

# Intoximeters

## Sensor

Uses a genuine, evidential quality Intoximeters electrochemical fuel cell sensor that is highly specific for alcohol in the human breath

## Calibration and Calibration Check Modes

- Calibration Mode - Access via FST View - Compatible with both wet bath and dry gas alcohol standards
- Accuracy Check - Access via FST View - Compatible with both wet bath and dry gas alcohol standards

## Response Time

- Produces results quickly on both positive and negative samples
- Quick recovery from both positive and negative samples

## Sampling System

- The Sampling Cup is designed to help automatically collect an air sample while a subject is blowing in the direction of the instrument
- Fully automatic sampling - no officer input required
- Manual sampling option

## Display

- Result is displayed for up to two (2) minutes
- Backlit LCD display
- Dimensions: 25.3mm x 20.2mm (511mm<sup>2</sup>)
- Displays results as Graphics
- Multi-color backlighting that can provide visual indicators of test conditions

## Controls

Two (2) control buttons used for instrument operation and function control

## Environmental

Operating Temperature Range: -15°C to 50°C with other ranges available

## Electromagnetic Compatibility (EMC)

CE Mark compliant for EMC compatibility for emissions and immunity

## Sampling Cup

Illuminated guide aids passive cup insertion in low light

## Power Supply

- Two (2) AA batteries
- 1,500+ tests per set of batteries
- Battery Status display and Battery Low warning
- Reverse Polarity protection

## Physical Characteristics

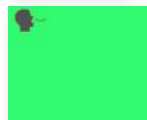
- Handheld
- ABS/Polycarbonate construction
- Impact-resistant rubber grip and display bezel included
- Weight: 170 grams
- Dimensions: 120mm x 70mm x 45mm

## Memory

- Test Counter: Displays the number of Positive & Negative Test Results.
- Storage up to 800 test results
- PC Interface: FST View for memory download, and Quality Assurance access (Interface Cable sold separately)

# Alco-Sensor FST<sup>®</sup> Passive Screener

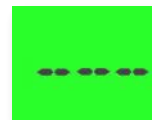
Automatic sampling, handheld passive screening device designed for officer safety and ease of use



"Ready to Sample"



"Positive Result"



"Negative Result"



"FST View PC Interface"

